

## Weather Part 3

---

**State whether the following statement is true or false.**

1. To measure wind speed, or how strongly the wind is blowing, cups of an anemometer rotate making the rod they're attached to spin faster.



- True  
 False

**Choose the correct answer.**

2. Wind is caused by air flowing from \_\_\_\_\_ pressure to \_\_\_\_\_ pressure areas.

- low, high  
 high, low

3. A difference between air pressures will cause a wind; the greater the difference, the \_\_\_\_\_ the wind.

- stronger
- weaker

4. A sea breeze occurs because the \_\_\_\_\_ is heated more quickly than \_\_\_\_\_ during day.

- land, water
- water, land

5. Which of the following best describes a rain gauge?

- an instrument that measures rainfall and consists of a funnel and measuring tube.
- an instrument that measures air pressure and consists of a funnel and measuring tube.

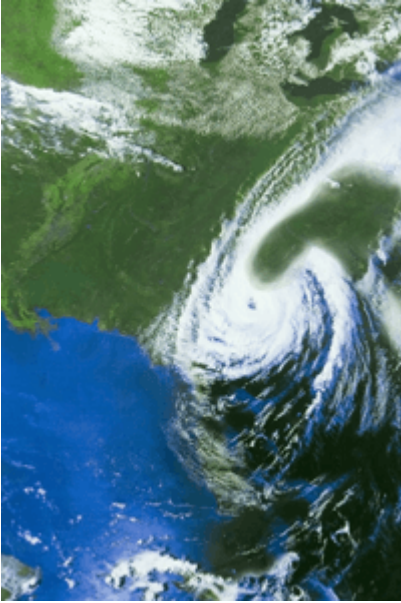
**State whether the following statement is true or false.**

6. The Earth's weather can be warm, cold, windy, dry, rainy, snowy, and different combinations of these.

- True
- False

Choose the correct answer.

7. Which of the following correctly defines a tropical depression?



- violent, tropical storm with wind speeds greater than 73 miles per hour.
- wind speeds of 39 to 73 miles per hour, with circulation of winds and rains more organized.
- area of heavy rain and winds often called a cyclone, with wind speeds of less than 39 miles per hour.

8. Which of the following correctly defines a tropical storm?



- violent, tropical storm with wind speeds greater than 73 miles per hour.
- wind speeds of 39 to 73 miles per hour, with circulation of winds and rains more organized.
- area of heavy rain and winds called a cyclone with wind speeds of less than 39 miles per hour.

9. Humidity is the amount of \_\_\_\_\_ in the air.

- gases
- water vapor

State whether the following statement is true or false.

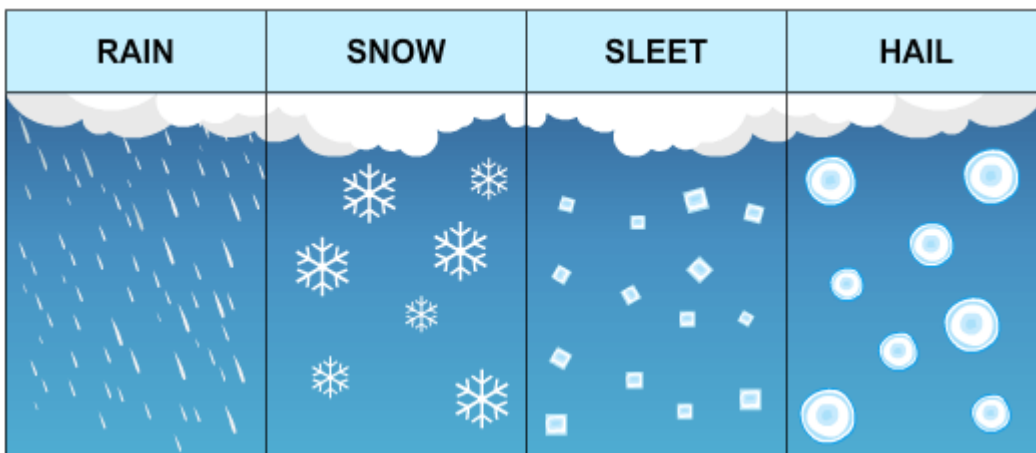
10. Without the movement of gases in the atmosphere, there would be no weather.



- True
- False

Choose the correct answer.

11. Rain, snow, hail, and sleet are examples of which of the following?



- precipitation
- humidity

12. Where does the water vapor in the air originate from?



- clouds high in the sky
- space
- water on Earth

13. The layer of gases surrounding the planet Earth is called the Earth's \_\_\_\_\_.



- air mass
- atmosphere

14. Which of the following best defines weather?



- Weather describes the conditions in the atmosphere.
- Weather describes the temperature of the Earth.

15. What is the measurement that tells how hot or cold the air is?



- temperature
- thermometer